

**SANSOME
& GEORGE**

sansomeandgeorge.co.uk



**SANSOME
& GEORGE**

**2 Bow Gardens, Sherfield-on-Loddon, Hook, Hampshire, RG27
0EH**

**Asking Price £330,000
Freehold**

SANSOME & GEORGE - This charming period terraced 2 BEDROOM bungalow is nestled in the heart of Sherfield On Loddon offering a perfect blend of convenience and tranquillity.

Boasting 2 bedrooms, 2 reception rooms, and 1 bathroom, this property is the ideal retreat for those seeking a cosy yet spacious abode. The inviting conservatory provides a perfect spot to relax and enjoy the surrounding greenery. With off-street parking available, you'll never have to worry about finding a space for your vehicle. The property exudes character and warmth, making it the perfect place to call home. Don't miss out on the opportunity to own this delightful slice of village life. Book a viewing today and step into your own little piece of paradise.

EPC EER - D

Council Tax Band - B

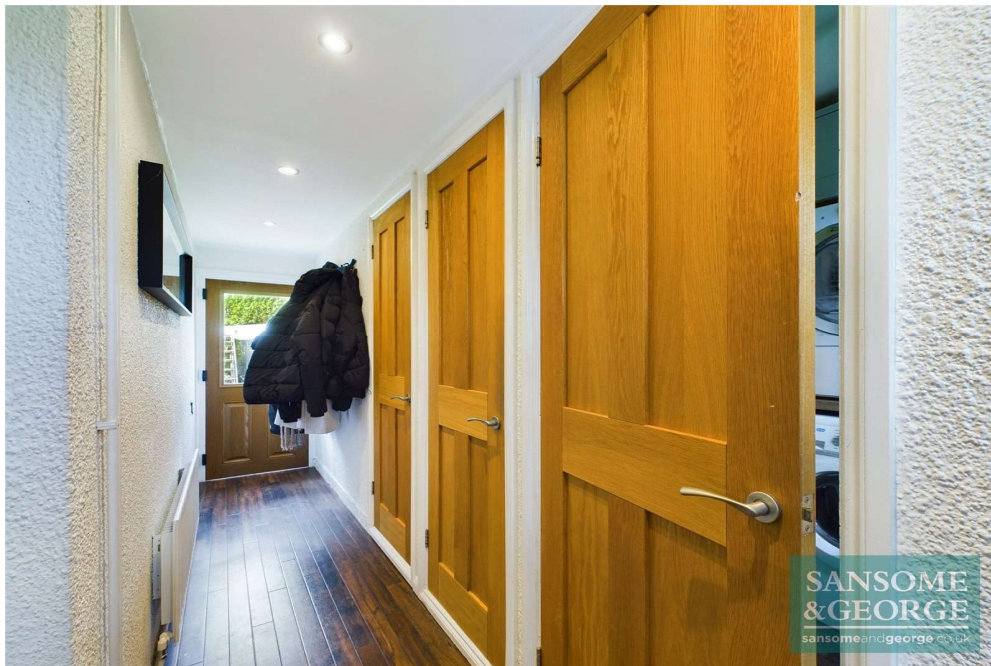
Council - Basingstoke & Deane

The above information may be subject to change during the transaction period.

These particulars are a general guide only. They do not form part of any contract. Services, systems and appliances have not been tested. Please note that all buyers attend property viewings at their own risk and must assess any hazards themselves. The title is currently under review for any potential covenants or restrictions and will be available upon request shortly.

- 2 Bedroom Bungalow
- Entrance Hall
- Kitchen
- Living room
- Conservatory
- 2 Bedrooms
- Bathroom
- Garden
- Driveway







Approximate total area⁽¹⁾
689.43 ft²

(1) Excluding balconies and terraces

While every attempt has been made to ensure accuracy, all measurements are approximate, not to scale. This floor plan is for illustrative purposes only.

GIRAFFE360





Energy Efficiency Rating		
	Current	Potential
<i>Very energy efficient - lower running costs</i>		
(92+) A		
(81-91) B		88
(69-80) C		
(55-68) D	68	
(39-54) E		
(21-38) F		
(1-20) G		
<i>Not energy efficient - higher running costs</i>		
England, Scotland & Wales	EU Directive 2002/91/EC	

Sansome and George - Bramley

Station House
 Sherfield Road
 Bramley
 Hants
 RG26 5AG

T: 01256 882 979

E: bramley@sansomeandgeorge.co.uk

www.sansomeandgeorge.co.uk

Sansome & George is a trading name of Sansome & George Hampshire Ltd.
 Registered in England and Wales no: 5133463. VAT no: 641 8655 23.

Disclaimer

Every attempt has been made to ensure accuracy, however these property particulars are approximate and for illustrative purposes only. They have been prepared in good faith and they are not intended to constitute part of an offer of contract. We have not carried out a structural survey and the services, appliances and specific fittings have not been tested. All photographs, measurements, floor plans and distances referred to are given as a guide only and should not be relied upon for the purchase of any fixture or fittings. Lease details, service charges and ground rent (where applicable) are given as a guide only and should be checked prior to agreeing a sale. Please note that all buyers attend property viewings at their own risk and must assess any hazards themselves.

Anti-Money Laundering Statement: We are required by law to conduct anti-money laundering checks on all those selling or buying a property. Whilst we retain responsibility for ensuring checks and any ongoing monitoring are carried out correctly, the initial checks are carried out on our behalf by Lifetime Legal who will contact you once you have agreed to instruct us in your sale or had an offer accepted on a property you wish to buy. The cost of these checks is £60 (incl. VAT), which covers the cost of obtaining relevant data and any manual checks and monitoring which might be required. This fee will need to be paid by you in advance of us publishing your property (in the case of a vendor) or issuing a memorandum of sale (in the case of a buyer), directly to Lifetime Legal, and is non-refundable. We will receive some of the fee taken by Lifetime Legal to compensate for its role in the provision of these checks.