

**SANSOME
&GEORGE**

sansomeandgeorge.co.uk



**SANSOME
&GEORGE**

16 Garrett Close, Kingsclere, Newbury, Hampshire, RG20 5SD

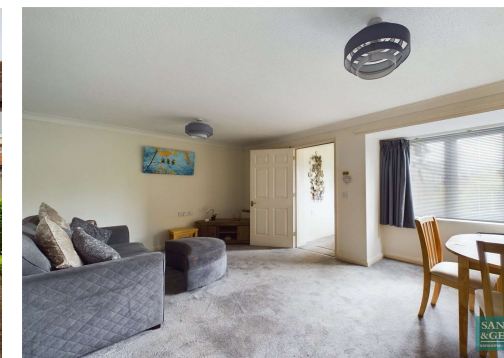
**Offers in excess of £175,000
Leasehold**

16 Garrett Close, Kingsclere, Newbury, Hampshire, RG20 5SD

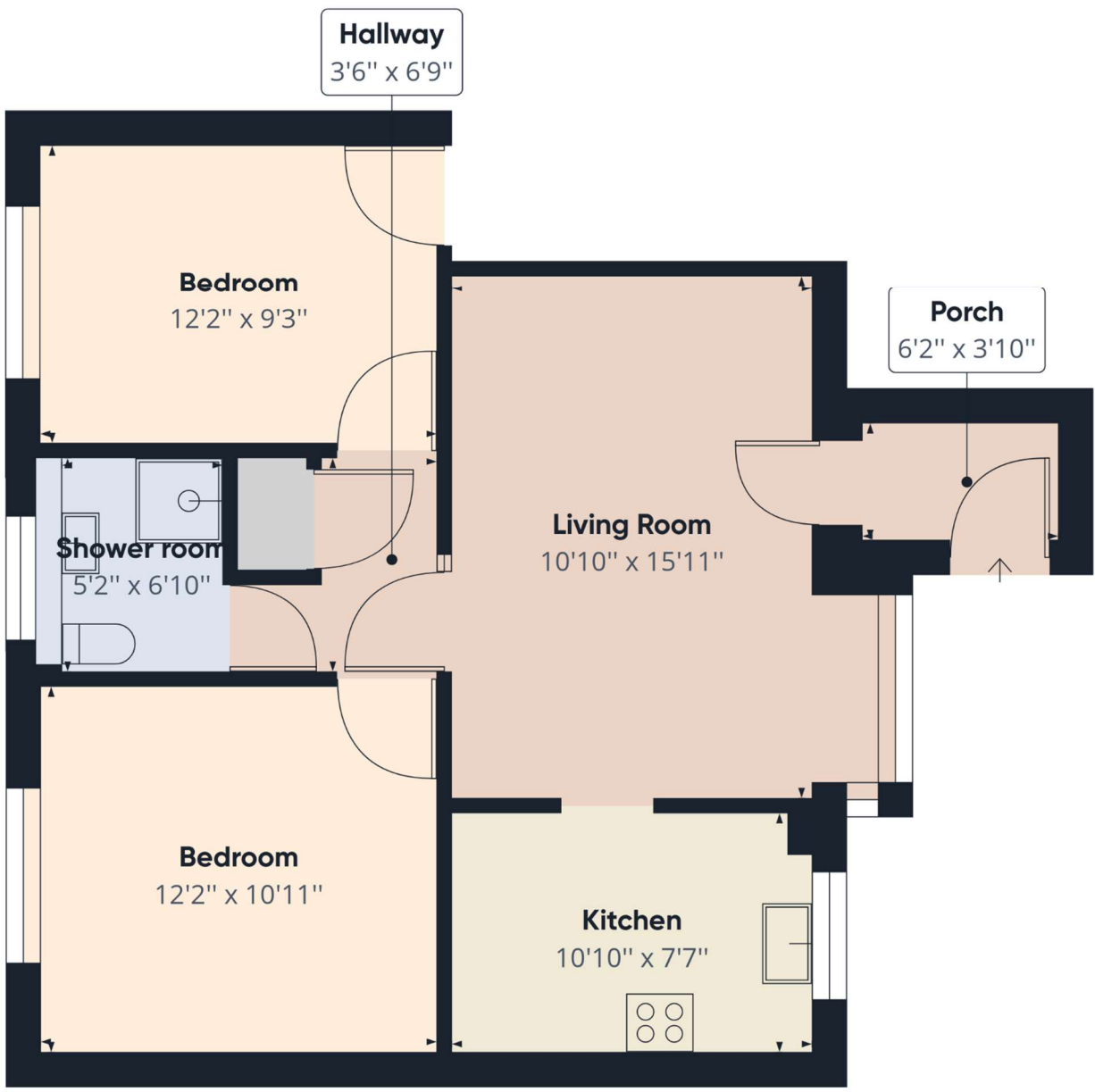
SANSOME & GEORGE - 2 BEDROOM GROUND FLOOR RETIREMENT APARTMENT set in a popular location in Kingsclere Village. Having been modernised by the current owners, This deceptively spacious home offers plenty of accommodation with modern living including: Entrance porch, living room, re-fitted kitchen, 2 bedrooms and re-fitted shower room. Property is surrounded communal gardens. Early viewings advised in order to avoid disappointment.

EPC EER C

- 2 Bedroom maisonette
- Ground Floor
- Entrance porch
- Living room
- Re-fitted kitchen
- 2 bedrooms
- Re-fitted shower room.
- Communal gardens.







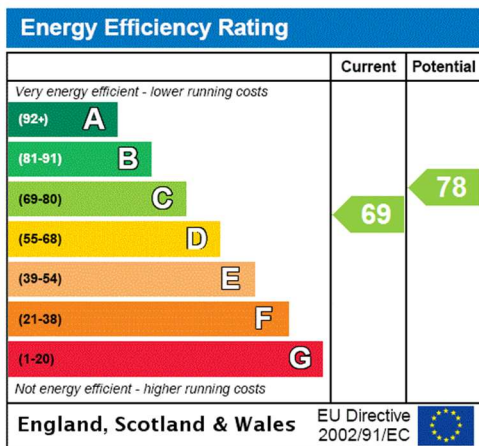
Approximate total area⁽¹⁾
635.19 ft²

(1) Excluding balconies and terraces

While every attempt has been made to ensure accuracy, all measurements are approximate, not to scale. This floor plan is for illustrative purposes only.

GIRAFFE 360





Sansome and George - Basingstoke

41 - 43 Winchester Street
Basingstoke
Hants
RG21 7EF

T: 01256 807 111

E: basingstoke@sansomeandgeorge.co.uk

www.sansomeandgeorge.co.uk

Sansome & George is a trading name of Sansome & George Hampshire Ltd.
Registered in England and Wales no: 5133463. VAT no: 641 8655 23.

Disclaimer

Every attempt has been made to ensure accuracy, however these property particulars are approximate and for illustrative purposes only. They have been prepared in good faith and they are not intended to constitute part of an offer of contract. We have not carried out a structural survey and the services, appliances and specific fittings have not been tested. All photographs, measurements, floor plans and distances referred to are given as a guide only and should not be relied upon for the purchase of any fixture or fittings. Lease details, service charges and ground rent (where applicable) are given as a guide only and should be checked prior to agreeing a sale. Please note that all buyers attend property viewings at their own risk and must assess any hazards themselves.

Anti-Money Laundering Statement: We are required by law to conduct anti-money laundering checks on all those selling or buying a property. Whilst we retain responsibility for ensuring checks and any ongoing monitoring are carried out correctly, the initial checks are carried out on our behalf by Lifetime Legal who will contact you once you have agreed to instruct us in your sale or had an offer accepted on a property you wish to buy. The cost of these checks is £60 (incl. VAT), which covers the cost of obtaining relevant data and any manual checks and monitoring which might be required. This fee will need to be paid by you in advance of us publishing your property (in the case of a vendor) or issuing a memorandum of sale (in the case of a buyer), directly to Lifetime Legal, and is non-refundable. We will receive some of the fee taken by Lifetime Legal to compensate for its role in the provision of these checks.