

WINSOME
GEORGE



17 Cuckoo Close, North Waltham

Basingstoke

£675,000

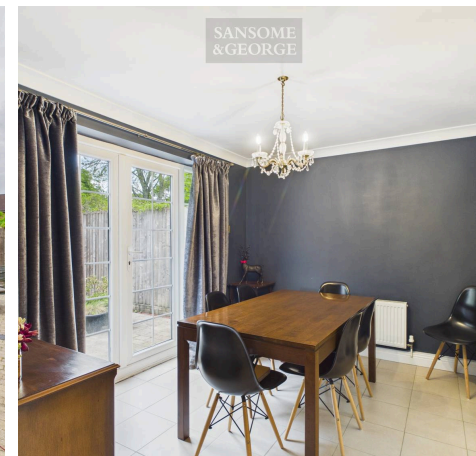
17 Cuckoo Close

North Waltham, Basingstoke

Sansome & George - This charming older style four bedroom semi-detached home offers an abundance of space and character, making it an ideal choice for families seeking versatile living accommodation in a well-established residential area. The property features three generously proportioned reception rooms, providing flexible options for formal entertaining, a family lounge, or a dedicated study or playroom, depending on your needs. The welcoming entrance hall leads to each of these reception rooms, creating a sense of flow and connectivity throughout the ground floor. The kitchen is well-appointed and offers ample storage and workspace, catering to the needs of busy households. Upstairs, the principal bedroom is a standout feature, benefiting from its own en-suite shower room and dressing room, offering a touch of luxury and convenience. The three further bedrooms are all well-sized, with plenty of natural light and space for freestanding furniture. The family bathroom is finished to a good standard and serves the additional bedrooms. Period features, such as high ceilings and large windows, are present throughout the home, adding to its sense of character and warmth. The generous rear garden provides an excellent space for children to play, for outdoor dining. With its blend of classic charm, spacious accommodation, and thoughtful touches such as the en-suite and dressing room to the main bedroom, this home represents a rare opportunity to acquire a substantial family property in a sought-after location.

Council Tax band: TBD

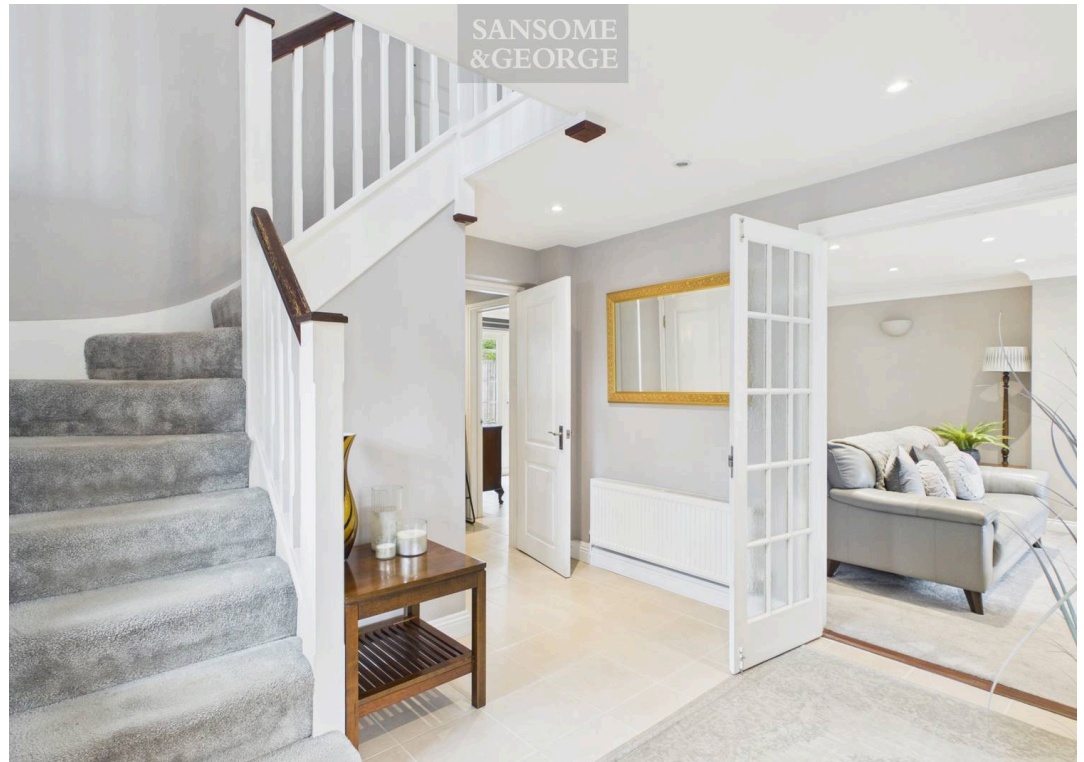
- Older style 4 Bedroom Semi-detached home
- 3 Reception rooms
- En-suite and dressing room to Bedroom 1
- Generous rear garden



SANSOME
&GEORGE



SANSOME
&GEORGE



SANSOME
&GEORGE

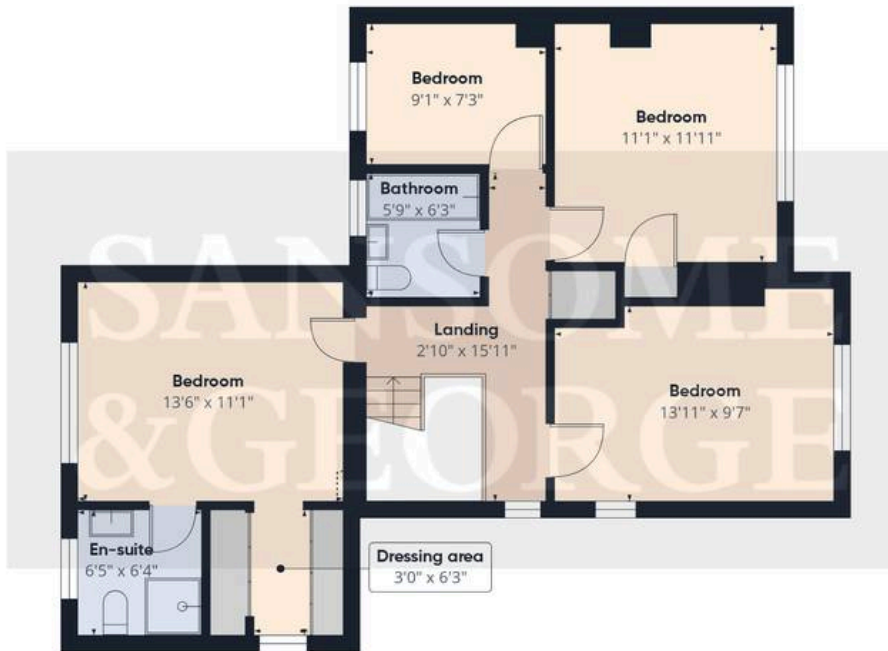


SANSOME
&GEORGE





Floor 0



Floor 1



Approximate total area⁽¹⁾
1520 ft²

(1) Excluding balconies and terraces

Reduced headroom
----- Below 5 ft

Calculations reference the RICS IPMS 3C standard. Measurements are approximate and not to scale. This floor plan is intended for illustration only.

GIRAFFE360



SANSOME
& GEORGE



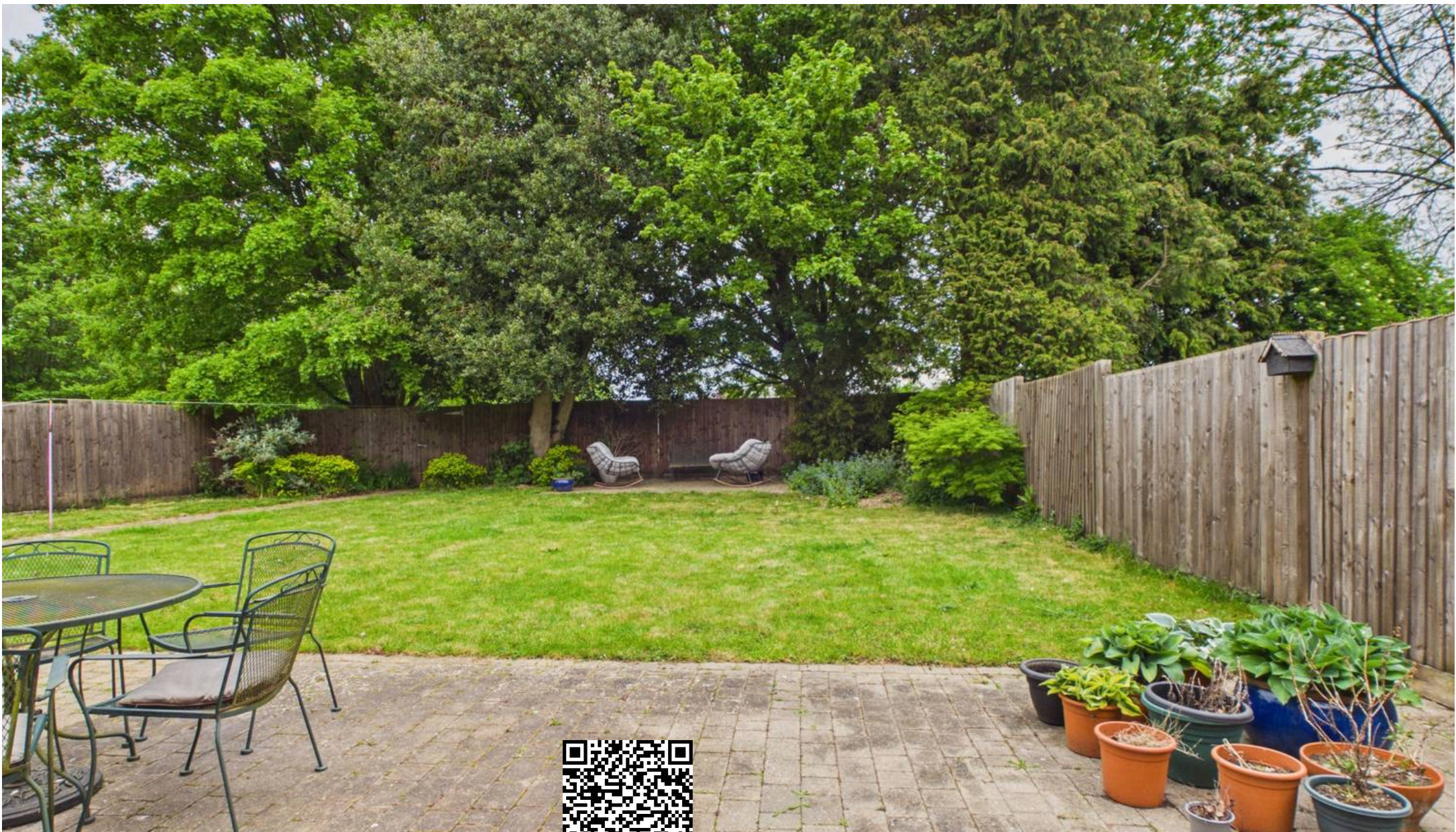
SANSOME
& GEORGE



SANSOME
& GEORGE



SANSOME
& GEORGE



Sansome & George Bramley Office

Station House, Sherfield Road, Bramley, RG26 5AG

01256 882979 • • www.sansomeandgeorge.co.uk

Disclaimer: Every attempt has been made to ensure accuracy, however these property particulars are approximate and for illustrative purposes only. They have been prepared in good faith and they are not intended to constitute part of an offer of contract. We have not carried out a structural survey and the services, appliances and specific fittings have not been tested.