

**sansome
& george**

SANSOME
& GEORGE



3 King Alfred Terrace, Kingsclere

Newbury

£365,000

3 King Alfred Terrace

Kingsclere, Newbury

Nestled in the heart of the popular village of Kingsclere, this attractive three bedroom home offers a superb blend of comfort and practicality, ideal for both families and professionals. The welcoming entrance hall leads to a spacious living room and features doors opening directly onto the garden, creating a seamless indoor-outdoor flow. The modern kitchen is well-appointed, providing ample storage and workspace, while a convenient downstairs W.C adds to the practical layout of the ground floor. Upstairs, the principal bedroom benefits from a stylish en-suite shower room, ensuring privacy and comfort, while two further bedrooms offer flexible accommodation for family, guests or a home office. The property is finished to a high standard throughout, with neutral décor and thoughtful touches that make it ready to move into.

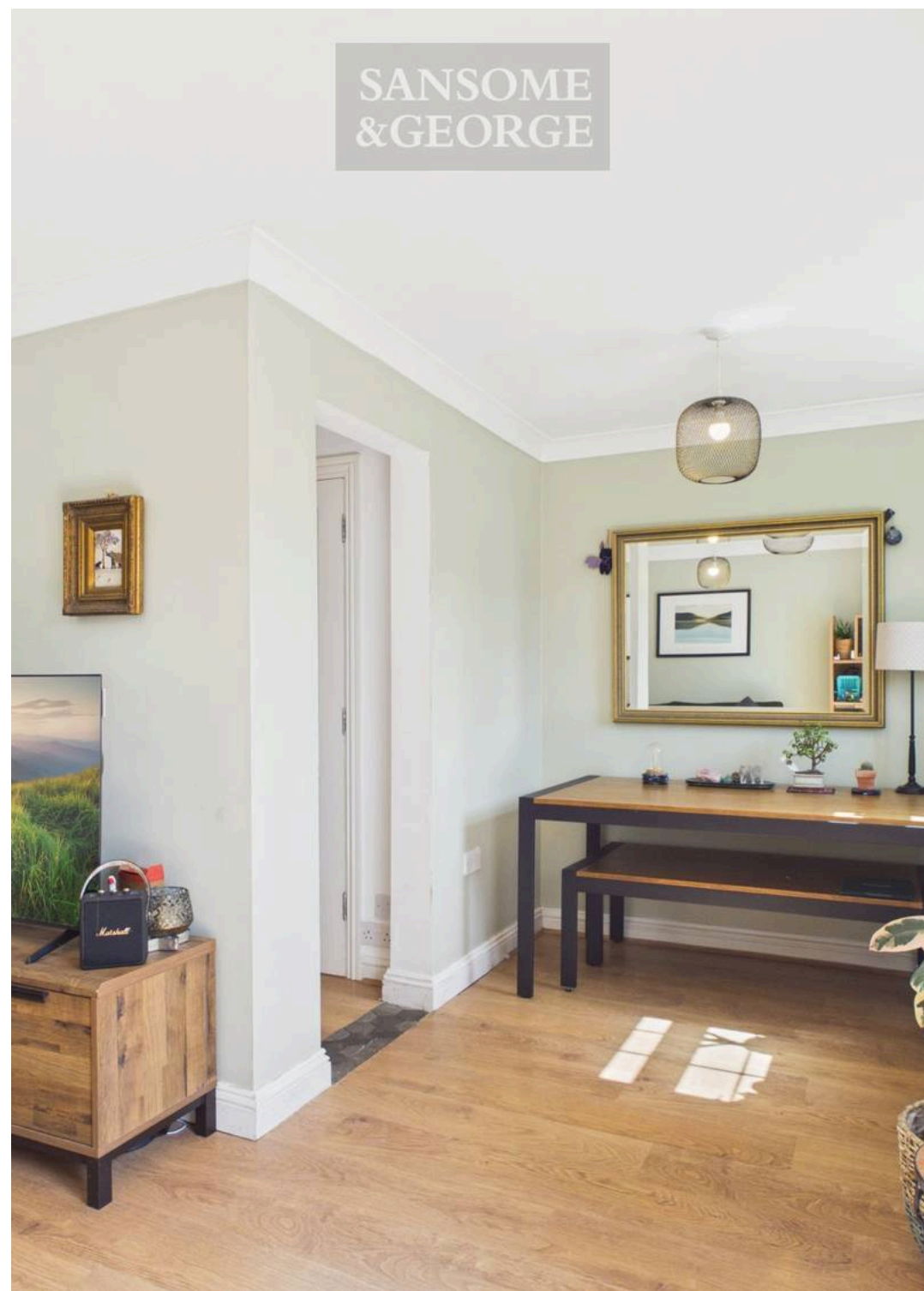
The outside space is a true highlight of this home. The rear garden is fully enclosed, providing a safe and tranquil environment for children or pets, and is mainly laid to lawn with a patio area ideal for outdoor dining or entertaining. A standout feature is the insulated garden outbuilding, which is equipped with heating and electricity (perfect for use as a home office, studio or gym). The property also benefits from two allocated parking spaces, ensuring convenience for residents and visitors alike. Located within easy reach of local amenities, schools and transport links, this home combines a peaceful village setting with excellent accessibility. Whether you are seeking a modern family home or a versatile property with additional workspace, this Kingsclere residence is sure to impress.

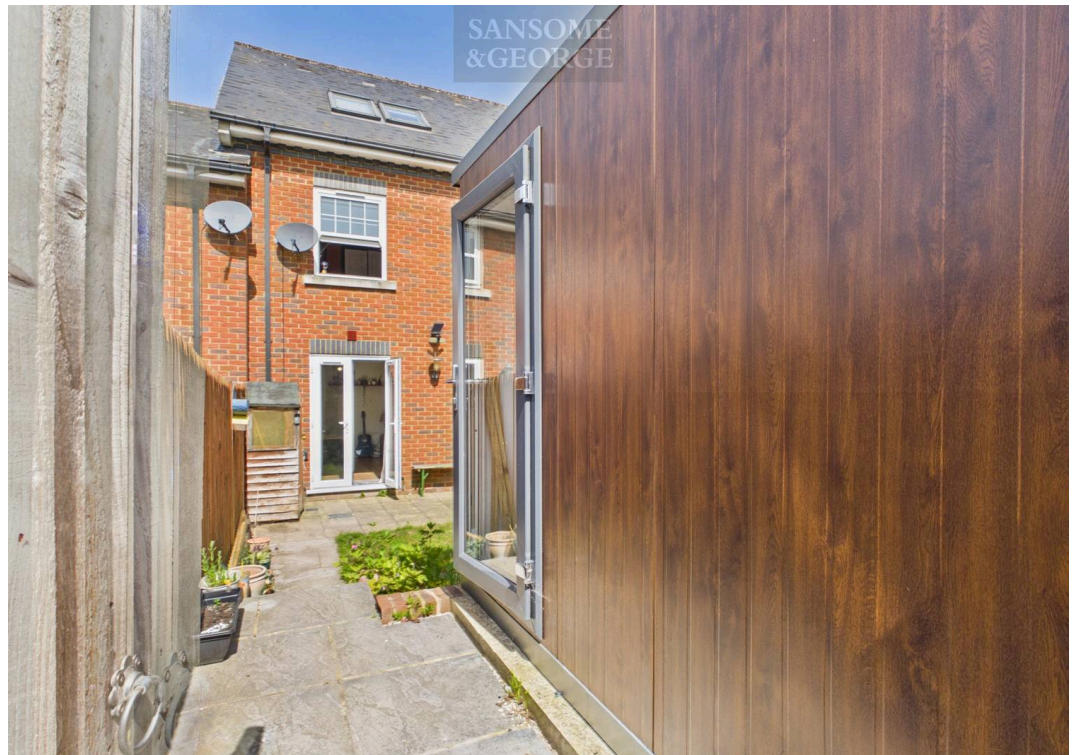
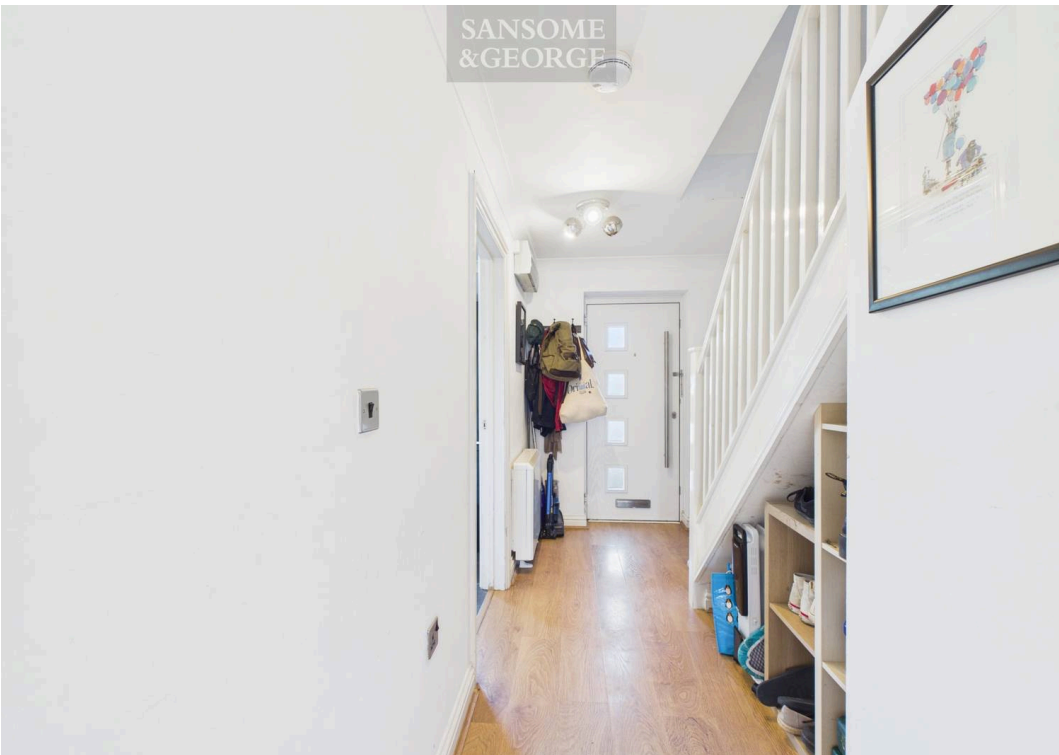
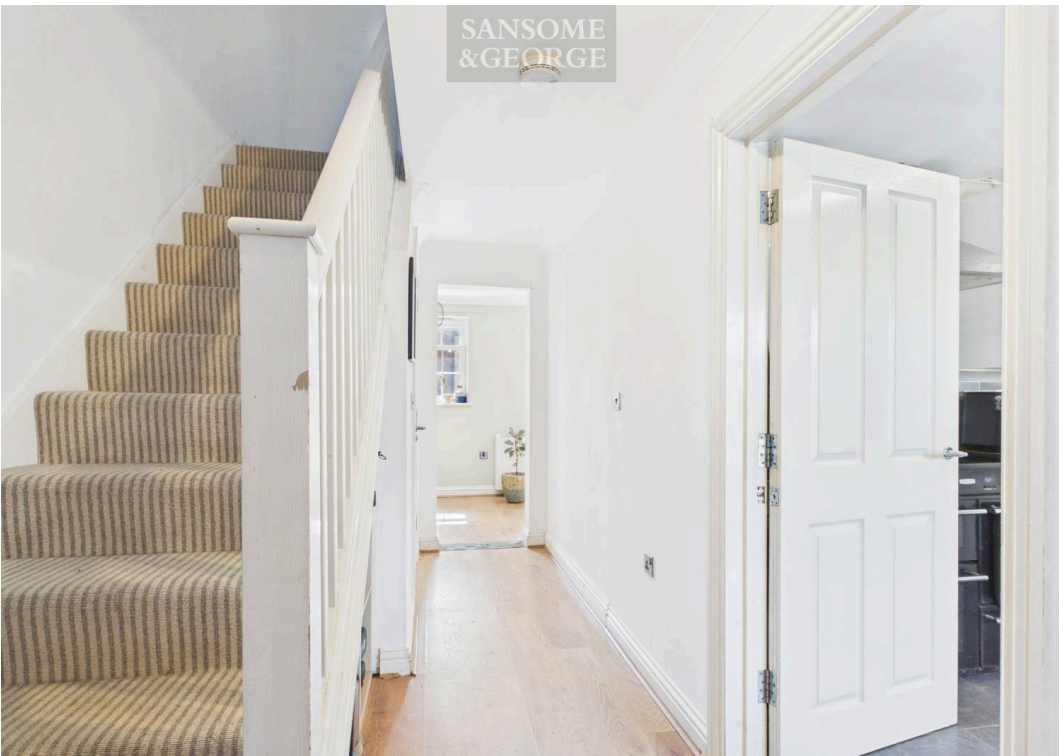
Council Tax band: D

Tenure: Freehold

EPC Energy Efficiency Rating: C

EPC Environmental Impact Rating: D





SANSOME
& GEORGE

3 King Alfred Terrace

Kingsclere, Newbury

- 3 Bedroom home
- Popular location in Kingsclere
- Downstairs W.C
- Living room with doors into garden
- Bedroom 1 with en-suite
- 2 further bedrooms
- Garden Outbuilding with insulation, heating and electricity
- Garden
- 2 Allocated Parking spaces



sansome
& george

SANSOME
&GEORGE



SANSOME
&GEORGE



SANSOME
&GEORGE

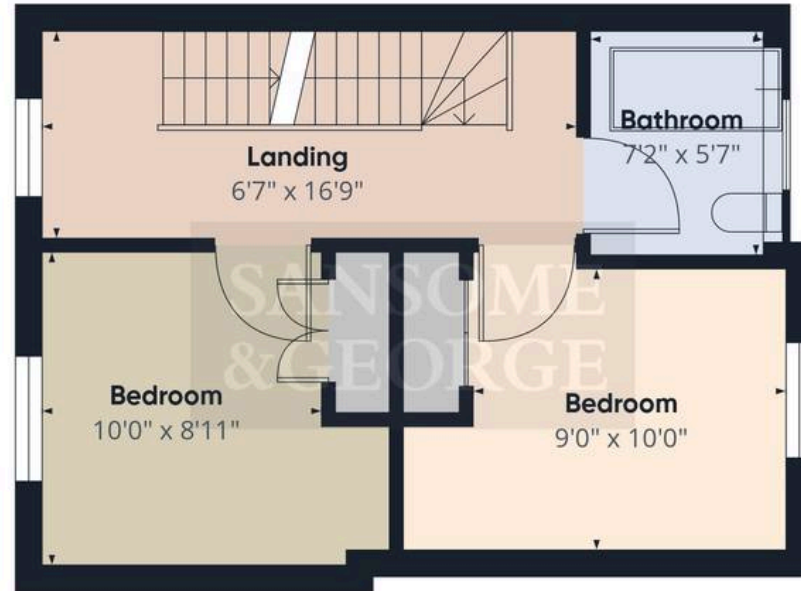


SANSOME
&GEORGE

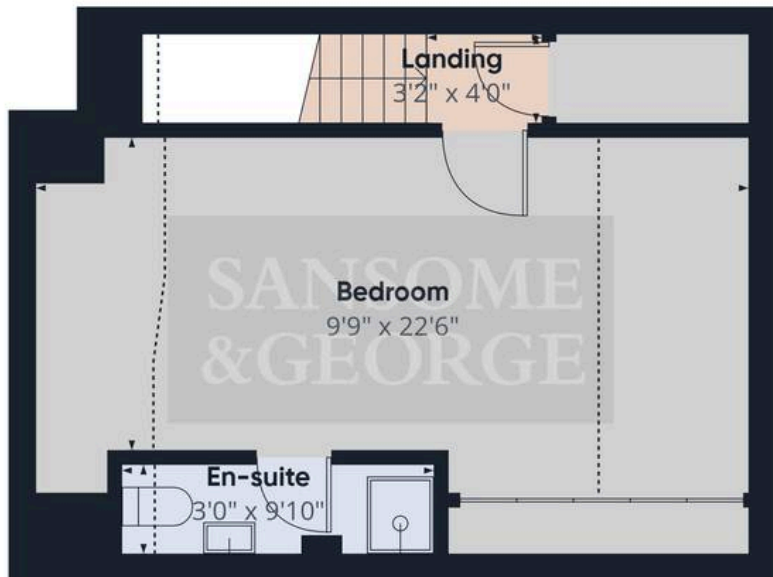




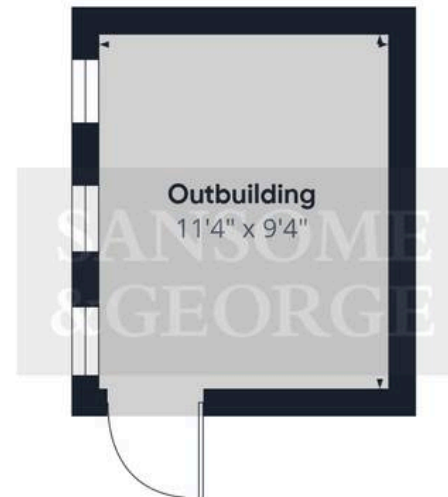
Floor 0 Building 1



Floor 1 Building 1



Floor 2 Building 1



Floor 0 Building 2

Approximate total area⁽¹⁾
1135 ft²

Reduced headroom
108 ft²

(1) Excluding balconies and terraces

Reduced headroom
..... Below 5 ft

Calculations reference the RICS IPMS 3C standard. Measurements are approximate and not to scale. This floor plan is intended for illustration only.

GIRAFFE360

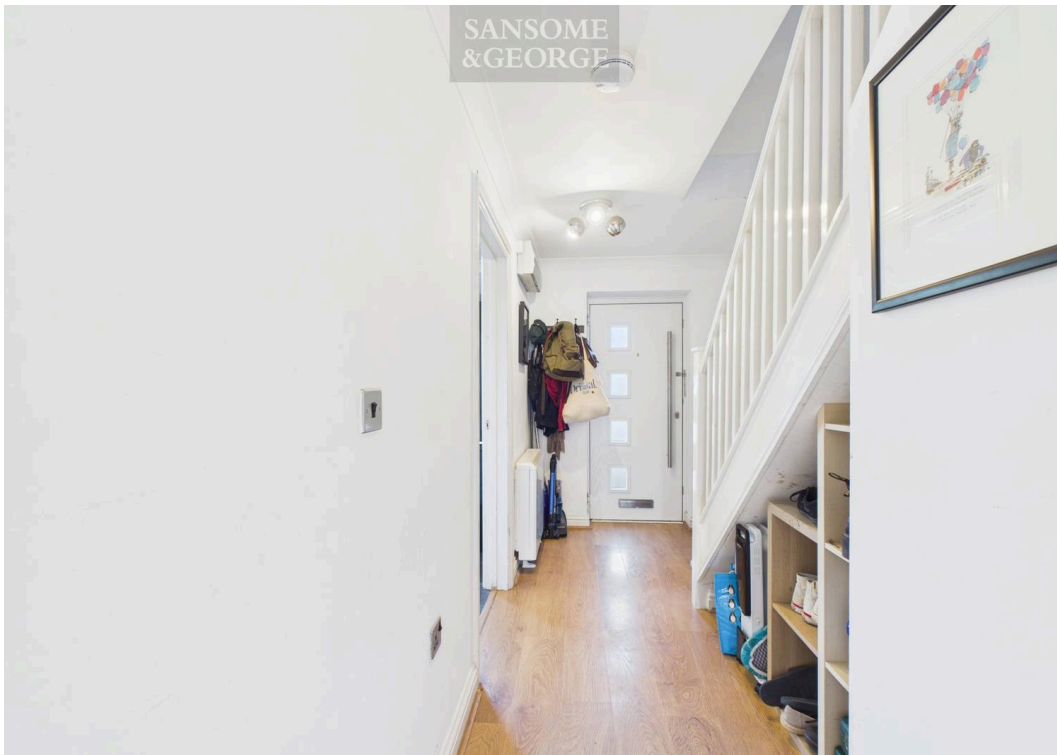
SANSOME
&GEORGE



SANSOME
&GEORGE

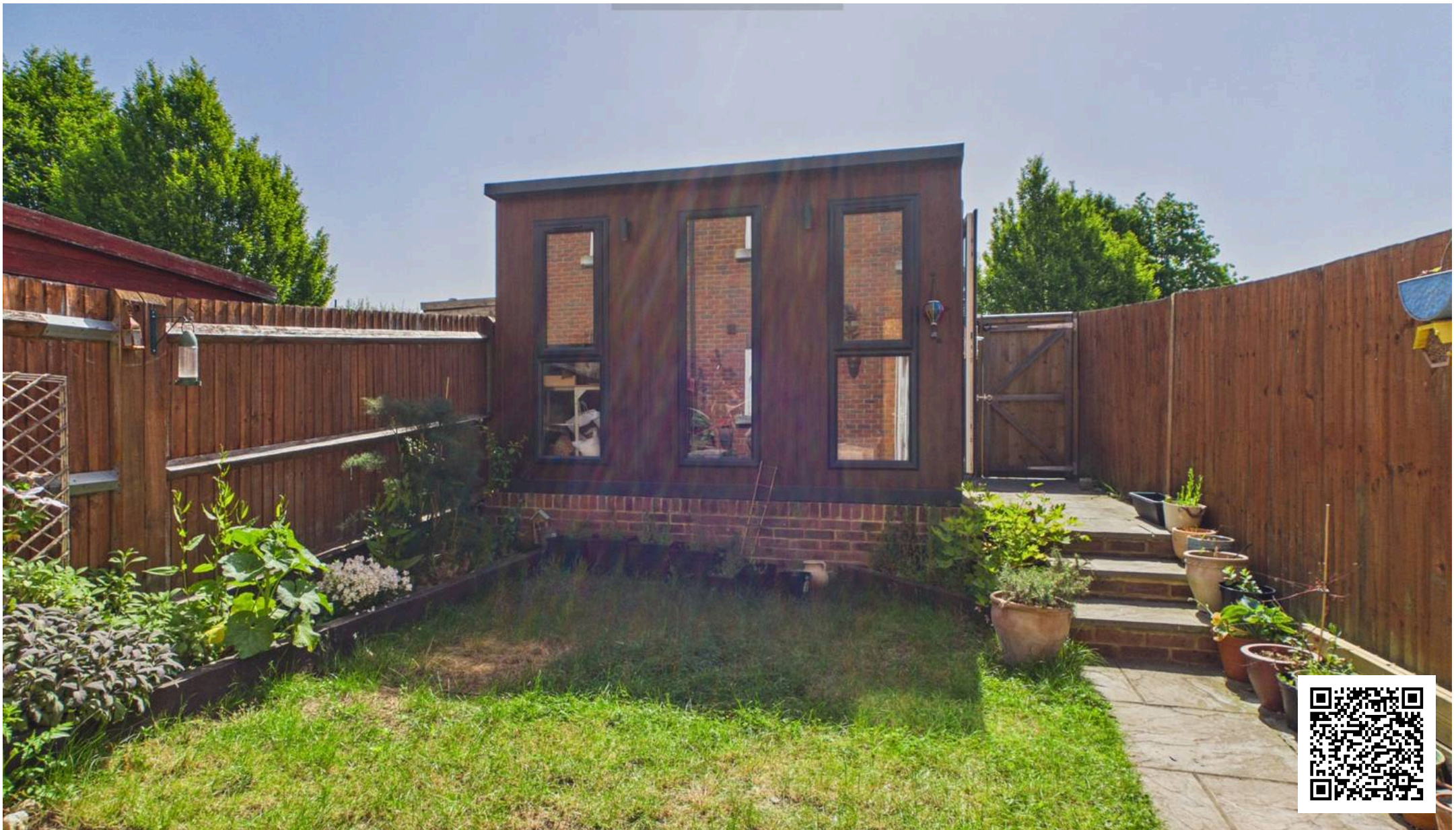


SANSOME
&GEORGE



SANSOME
&GEORGE





Sansome & George Kingsclere Office

Sansome & George, 2 George Street - RG20 5NQ

01635 297

111

• kingsclere@sansomeandgeorge.co.uk • www.sansomeandgeorge.co.uk/