

**SANSOME
&GEORGE**

sansomeandgeorge.co.uk

SANSOME
&GEORGE



72 Newport Road, Newbury, Berkshire, RG14 2AS

Offers Over £265,000 Freehold

Sansome & George - Step into this charming 2 Bedroom end of terrace house, boasting 2 bedrooms and a cosy reception room perfect for unwinding after a long day. With its modern design and convenient layout, this property is sure to steal your heart. The kitchen is a culinary dream, while the garden and garage offer ample space for outdoor activities and storage. Located in a sought-after area, this property is perfect for first-time buyers or those looking to downsize. Don't miss out on the chance to make this inviting house your new home sweet home. Book a viewing today and see for yourself all that this gem has to offer!

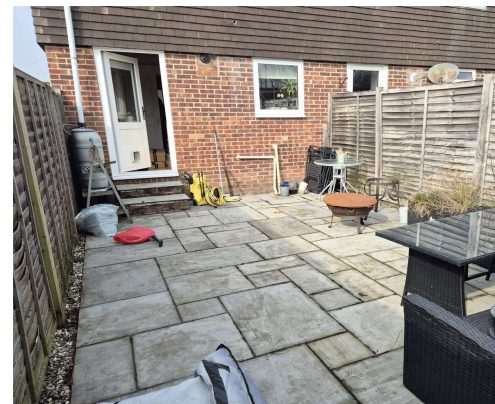
EPC - TBC

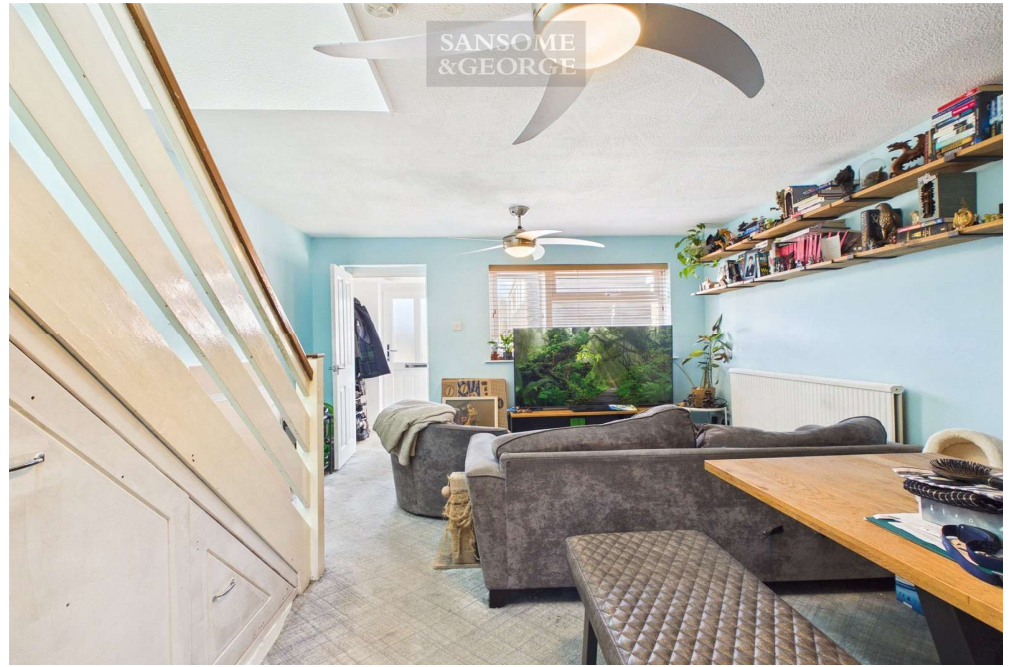
Local Authority - West Berkshire

Council Tax Band - C



- 2 Bedroom End of terrace home
- Living room
- Kitchen
- 2 Bedrooms
- Bathroom
- Garden
- Garage (in block)

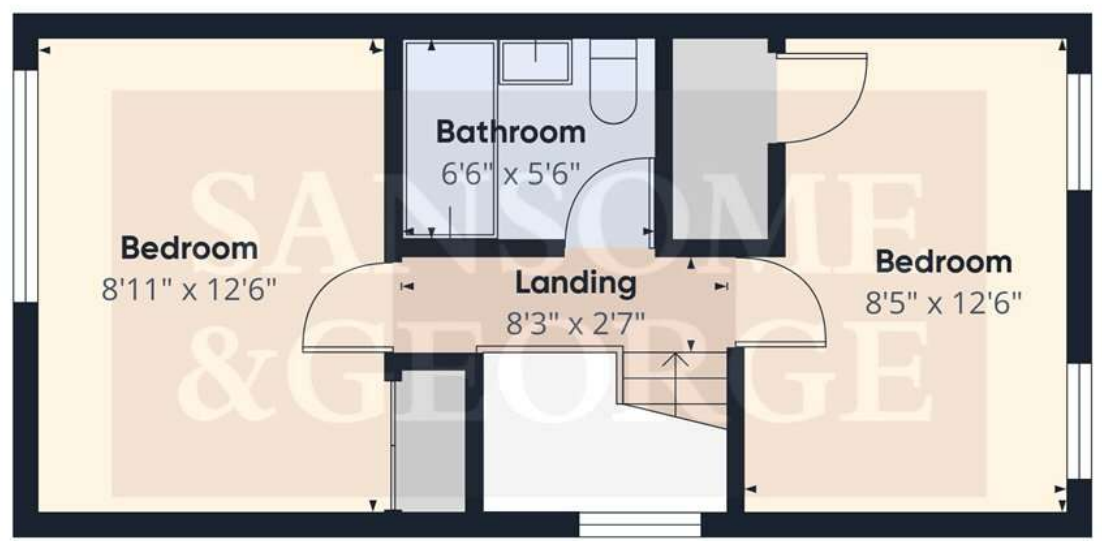






Floor 0

Approximate total area⁽¹⁾
630 ft²

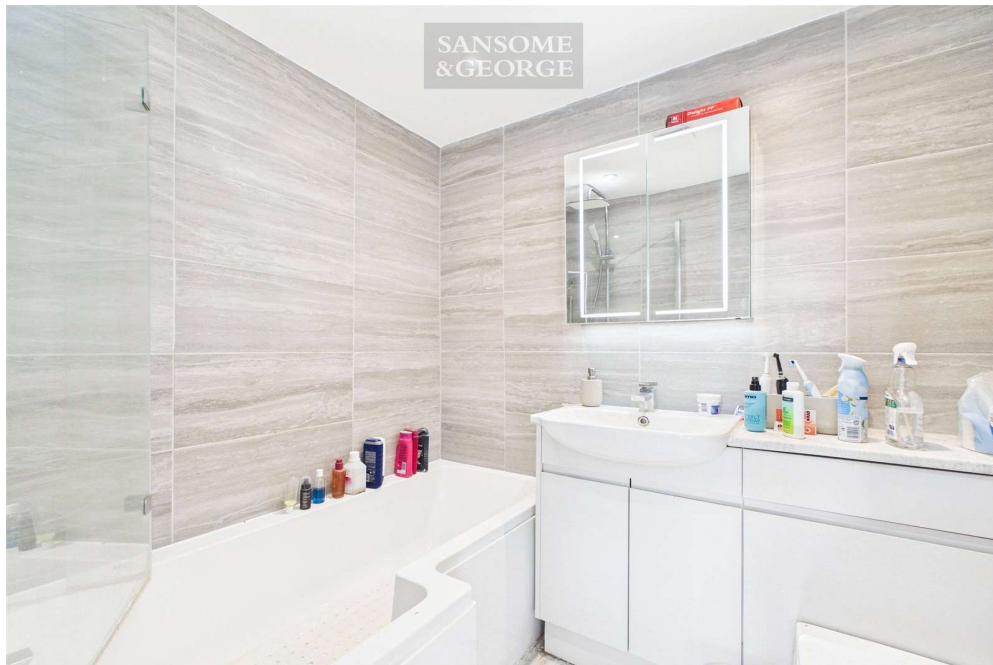


Floor 1



(1) Excluding balconies and terraces

Calculations reference the RICS IPMS 3C standard. Measurements are approximate and not to scale. This floor plan is intended for illustration only.





Sansome and George - Basingstoke

41 - 43 Winchester Street
Basingstoke
Hants
RG21 7EF

T: 01256 807 111

E: basingstoke@sansomeandgeorge.co.uk

www.sansomeandgeorge.co.uk

Sansome & George is a trading name of Sansome & George Hampshire Ltd.
Registered in England and Wales no: 5133463. VAT no: 641 8655 23.

Disclaimer

Every attempt has been made to ensure accuracy, however these property particulars are approximate and for illustrative purposes only. They have been prepared in good faith and they are not intended to constitute part of an offer of contract. We have not carried out a structural survey and the services, appliances and specific fittings have not been tested. All photographs, measurements, floor plans and distances referred to are given as a guide only and should not be relied upon for the purchase of any fixture or fittings. Lease details, service charges and ground rent (where applicable) are given as a guide only and should be checked prior to agreeing a sale. Please note that all buyers attend property viewings at their own risk and must assess any hazards themselves.

Anti-Money Laundering Statement: We are required by law to conduct anti-money laundering checks on all those selling or buying a property. Whilst we retain responsibility for ensuring checks and any ongoing monitoring are carried out correctly, the initial checks are carried out on our behalf by Lifetime Legal who will contact you once you have agreed to instruct us in your sale or had an offer accepted on a property you wish to buy. The cost of these checks is £80 (incl. VAT), which covers the cost of obtaining relevant data and any manual checks and monitoring which might be required. This fee will need to be paid by you in advance of us publishing your property (in the case of a vendor) or issuing a memorandum of sale (in the case of a buyer), directly to Lifetime Legal, and is non-refundable. We will receive some of the fee taken by Lifetime Legal to compensate for its role in the provision of these checks.