



50 Longbridge Road, Bramley

Tadley

£425,000

# 50 Longbridge Road

Bramley, Tadley

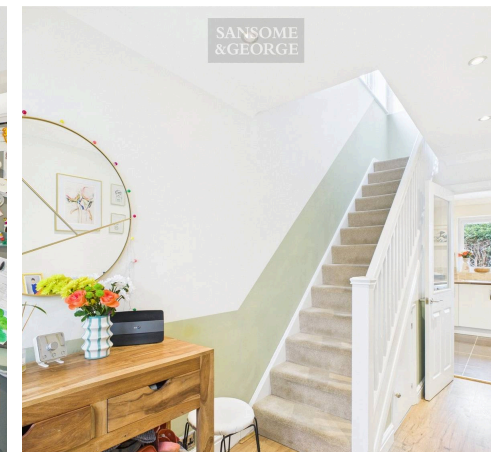
Charming 3 bed semi in Bramley. Spacious 967 sq ft, garden, off-street parking, office (garage conversion). EPC D, Council Tax Band D. Ideal blend of character and modern comfort.  
Council Tax band: TBD

Tenure: Freehold

EPC Energy Efficiency Rating: D

EPC Environmental Impact Rating: D

- 3 Bedroom semi-detached home
- Downstairs WC
- Living Room
- Kitchen/Breakfast Room
- Sunroom
- Office (converted from Garage)
- 3 Bedrooms
- Bathroom
- Garden
- Driveway



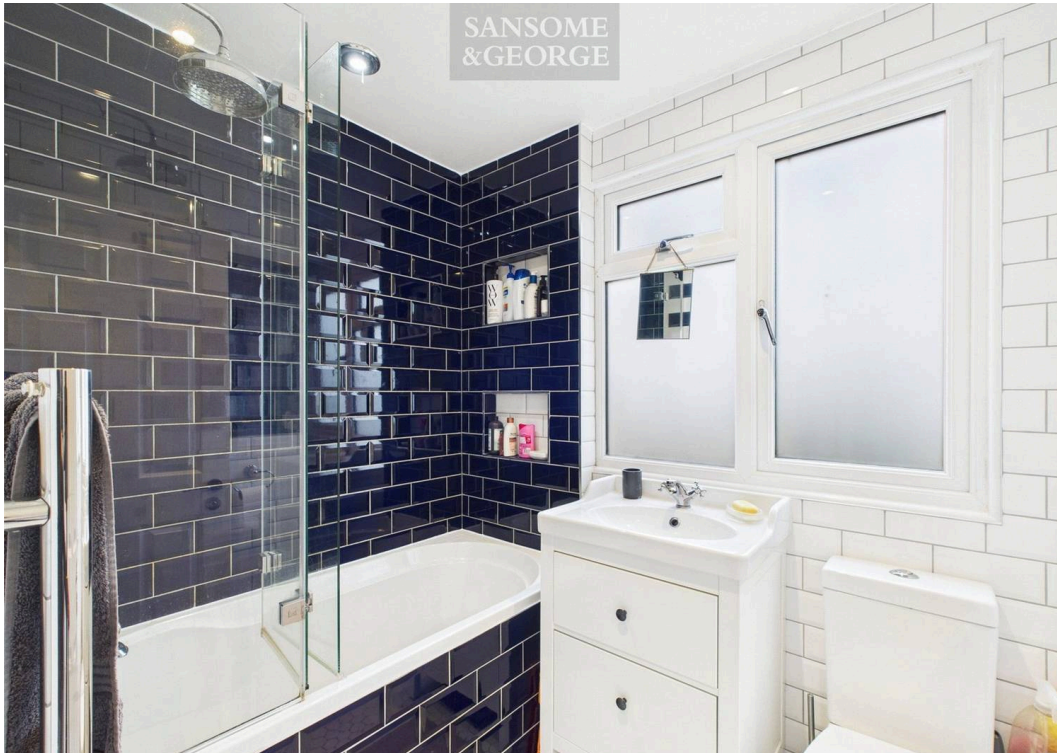
SANSOME  
&GEORGE



SANSOME  
&GEORGE

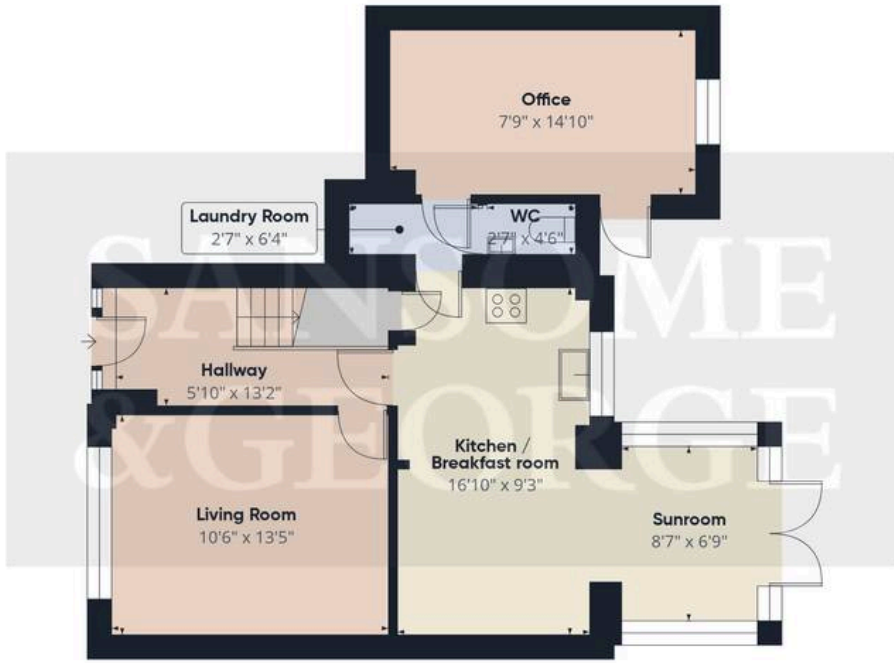


SANSOME  
&GEORGE



SANSOME  
&GEORGE





Floor 0

Approximate total area<sup>(1)</sup>  
967 ft<sup>2</sup>

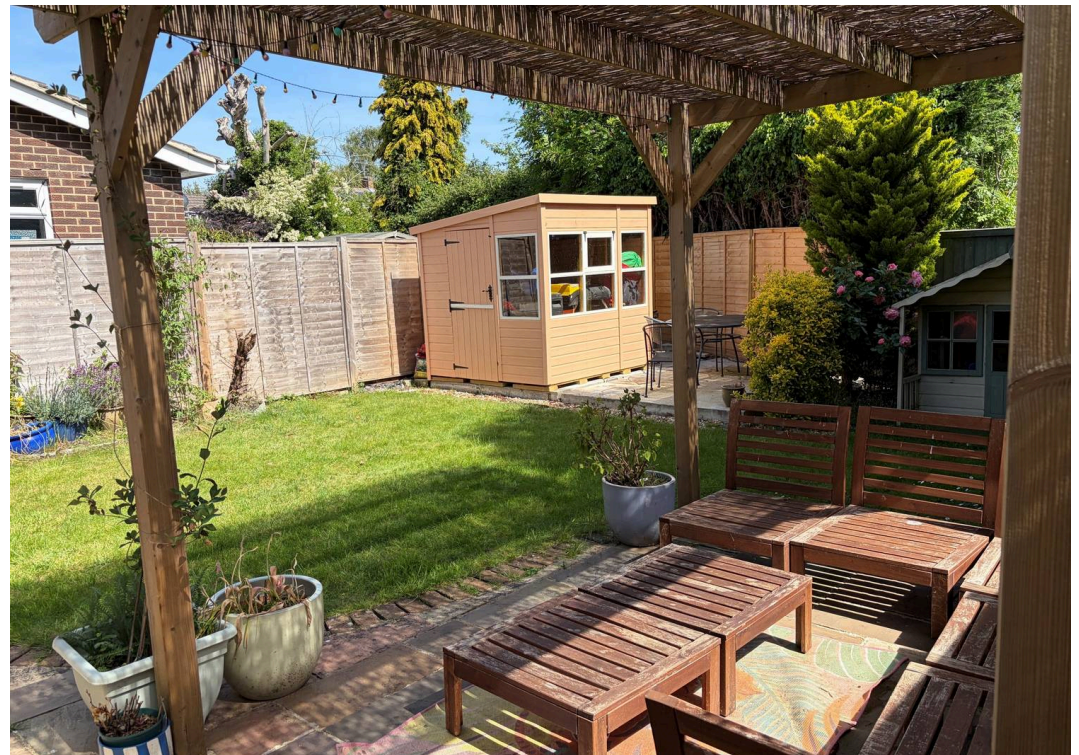
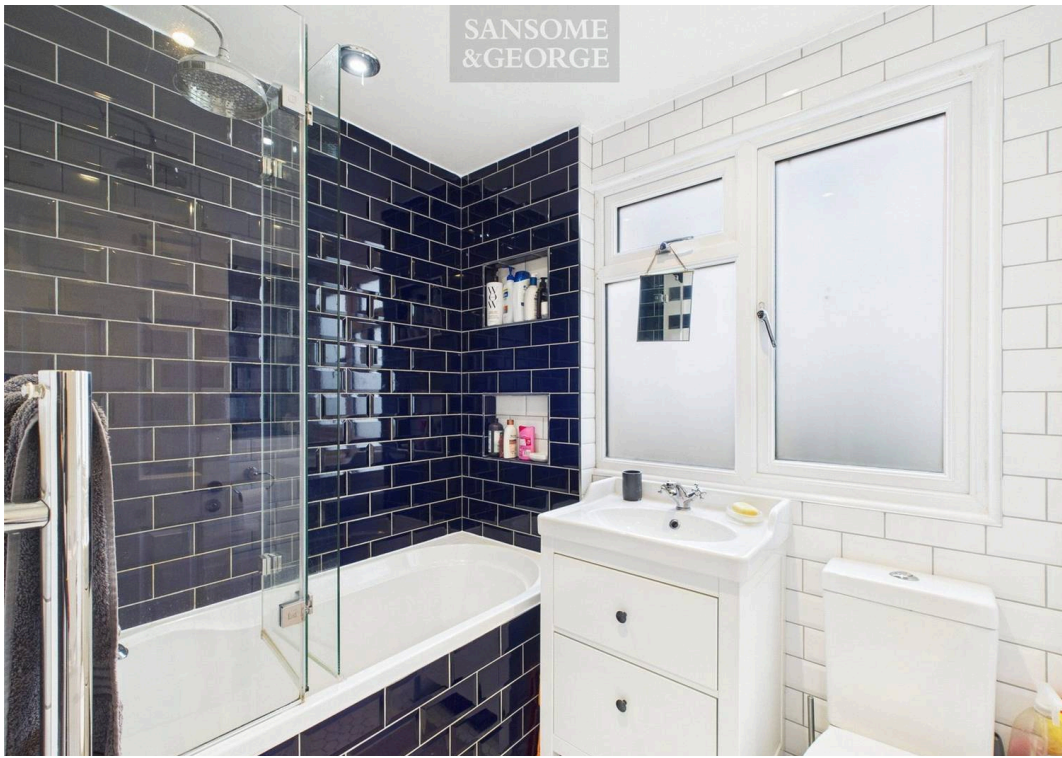


Floor 1



(1) Excluding balconies and terraces

Calculations reference the RICS IPMS 3C standard. Measurements are approximate and not to scale. This floor plan is intended for illustration only.





## Sansome & George Bramley Office

Sansome & George, Sherfield Road – RG26 5AG

01256 882979

[bramley@sansomeandgeorge.co.uk](mailto:bramley@sansomeandgeorge.co.uk)

[www.sansomeandgeorge.co.uk/](http://www.sansomeandgeorge.co.uk/)

Disclaimer: Every attempt has been made to ensure accuracy, however these property particulars are approximate and for illustrative purposes only. They have been prepared in good faith and they are not intended to constitute part of an offer of contract. We have not carried out a structural survey and the services, appliances and specific fittings have not been tested. All photographs, measurements, floor plans and distances referred to are given as a guide only and should not be relied upon for the purchase of any fixture or fittings. Lease details, service charges and ground rent (where applicable) are given as a guide only and should be checked prior to agreeing a sale. Please note that all buyers attend property viewings at their own risk and must assess any hazards themselves. Anti-