

**SANSOME  
&GEORGE**

[sansomeandgeorge.co.uk](http://sansomeandgeorge.co.uk)



**SANSOME  
&GEORGE**

[sansomeandgeorge.co.uk](http://sansomeandgeorge.co.uk)

**143 Stephens Road, Tadley, Hampshire, RG26 3RT**

**Offers in excess of £270,000    Freehold**



SANSOME & GEORGE - \*\* Virtual tour available \*\*

Deceptively spacious 3 BEDROOM terraced house, in a secluded location facing wooded area. This property offers a peaceful retreat from the hustle and bustle of city life, while remaining conveniently close to local amenities and transport links.

The interior is perfect for family living, with plenty of room for relaxation and entertaining. Although the property requires modernisation it provides good accommodation. The property also benefits from a garage (in block) and a generous rear garden.

Don't miss out on the opportunity to make this property your own!

EPC - D

Local Authority - Basingstoke & Deane

Council Tax Band - C

Services available – mains gas, drainage and electric.

These particulars are a general guide only. They do not form part of any contract. Services, systems and appliances have not been tested. Please note that all buyers attend property viewings at their own risk and must assess any hazards themselves. The title is currently under review for any potential covenants or restrictions and will be available upon request shortly.

- 3 Bedroom terraced home
- Entrance Hall
- Living room
- Kitchen
- 3 Bedrooms
- Bathroom
- Garden
- Garage (in block)

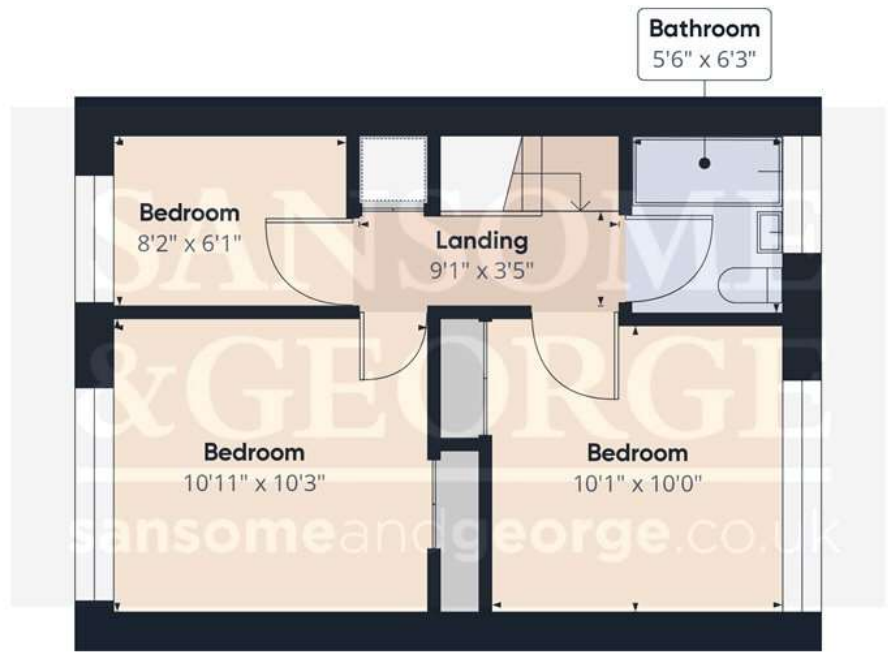








Floor 0



Floor 1

**Approximate total area<sup>(1)</sup>**  
729.95 ft<sup>2</sup>

(1) Excluding balconies and terraces

While every attempt has been made to ensure accuracy, all measurements are approximate, not to scale. This floor plan is for illustrative purposes only.

**GIRAFFE360**









Score	Energy rating	Current	Potential
92+	<b>A</b>		
81-91	<b>B</b>		89 B
69-80	<b>C</b>		
55-68	<b>D</b>	68 D	
39-54	<b>E</b>		
21-38	<b>F</b>		
1-20	<b>G</b>		

## Sansome and George - Tadley

1 The Parade  
Franklin Avenue  
Tadley  
Hants  
RG26 4ET

**T:** 0118 981 0022

**E:** [tadley@sansomeandgeorge.co.uk](mailto:tadley@sansomeandgeorge.co.uk)

**www.sansomeandgeorge.co.uk**

Sansome & George is a trading name of Sansome & George Hampshire Ltd.  
Registered in England and Wales no: 5133463. VAT no: 641 8655 23.

### Disclaimer

Every attempt has been made to ensure accuracy, however these property particulars are approximate and for illustrative purposes only. They have been prepared in good faith and they are not intended to constitute part of an offer of contract. We have not carried out a structural survey and the services, appliances and specific fittings have not been tested. All photographs, measurements, floor plans and distances referred to are given as a guide only and should not be relied upon for the purchase of any fixture or fittings. Lease details, service charges and ground rent (where applicable) are given as a guide only and should be checked prior to agreeing a sale. Please note that all buyers attend property viewings at their own risk and must assess any hazards themselves.

**Anti-Money Laundering Statement:** We are required by law to conduct anti-money laundering checks on all those selling or buying a property. Whilst we retain responsibility for ensuring checks and any ongoing monitoring are carried out correctly, the initial checks are carried out on our behalf by Lifetime Legal who will contact you once you have agreed to instruct us in your sale or had an offer accepted on a property you wish to buy. The cost of these checks is £80 (incl. VAT), which covers the cost of obtaining relevant data and any manual checks and monitoring which might be required. This fee will need to be paid by you in advance of us publishing your property (in the case of a vendor) or issuing a memorandum of sale (in the case of a buyer), directly to Lifetime Legal, and is non-refundable. We will receive some of the fee taken by Lifetime Legal to compensate for its role in the provision of these checks.